

**GPR102 Polyclonal Antibody**  
**Purified Rabbit Polyclonal Antibody (Pab)**  
**Catalog # AP55963****Specification****GPR102 Polyclonal Antibody - Product Information**

Application	WB, IHC-P, IHC-F, IF, ICC, E
Primary Accession	<a href="#">O969N4</a>
Host	Rabbit
Clonality	Polyclonal
Calculated MW	38029

**GPR102 Polyclonal Antibody - Additional Information****Gene ID** 83551**Other Names**

Trace amine-associated receptor 8, TaR-8, Trace amine receptor 8, G-protein coupled receptor 102, Trace amine receptor 5, TaR-5, TAAR8, GPR102, TA5, TAR5, TRAR5

**Dilution**

<span class = "dilution\_WB">WB~~1:1000</span><br \><span class = "dilution\_IHC-P">IHC-P~~N/A</span><br \><span class = "dilution\_IHC-F">IHC-F~~N/A</span><br \><span class = "dilution\_IF">IF~~1:50~200</span><br \><span class = "dilution\_ICC">ICC~~N/A</span><br \><span class = "dilution\_E">E~~N/A</span>

**Format**

0.01M TBS(pH7.4), 0.09% (W/V) sodium azide and 50% Glyce

**Storage**

Store at -20 °C for one year. Avoid repeated freeze/thaw cycles. When reconstituted in sterile pH 7.4 0.01M PBS or diluent of antibody the antibody is stable for at least two weeks at 2-4 °C.

**GPR102 Polyclonal Antibody - Protein Information****Name** TAAR8**Synonyms** GPR102, TA5, TAR5, TRAR5**Function**

Olfactory receptor specific for trace amines (By similarity). Trace amine compounds are enriched in animal body fluids and act on trace amine-associated receptors (TAARs) to elicit both intraspecific and interspecific innate behaviors (By similarity). Ligand-binding causes a conformation change that triggers signaling via G alpha proteins, possibly G(i)/G(o) G alpha proteins (PubMed:<a href="http://www.uniprot.org/citations/25391046" target="\_blank">25391046</a>).

**Cellular Location**

Cell membrane; Multi-pass membrane protein

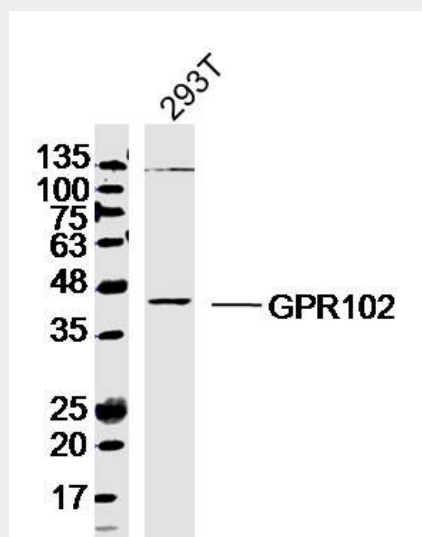
**Tissue Location**

Expressed in kidney and amygdala. Not expressed in other tissues or brain regions tested.

**GPR102 Polyclonal Antibody - Protocols**

Provided below are standard protocols that you may find useful for product applications.

- [Western Blot](#)
- [Blocking Peptides](#)
- [Dot Blot](#)
- [Immunohistochemistry](#)
- [Immunofluorescence](#)
- [Immunoprecipitation](#)
- [Flow Cytometry](#)
- [Cell Culture](#)

**GPR102 Polyclonal Antibody - Images**

Sample: 293T Cell (Human) Lysate at 40 ug  
Primary: Anti-GPR102 (bs-15355R) at 1/300 dilution  
Secondary: IRDye800CW Goat Anti-Rabbit IgG at 1/20000 dilution  
Predicted band size: 38 kD  
Observed band size: 42 kD